

STARHOTELS®
PREMIUM

Metropole
ROMA

Metropole

ROMA



Comfort without compromise

As the saying goes, “when in Roma, do as the Romans do.” And few hotels capture the spirit of this dynamic city quite like the Metropole. Standing close to the Termini railway station and the Teatro dell’Opera of Rome, you’re in the midst of everything. Many of the top-floor suites even have views of St Peter’s Basilica.

But, set apart from the whizzing Vespas and honking horns, this is also a peaceful spot, fully refurbished to offer comfort without compromise. For a taste of real Italy, as well as international favorites, the Apicio by Eataly restaurant is fast becoming a Roma institution.

Metropole

ROMA



Location

Next to the Termini Railway Station and the Opera, a few minutes away from the main historical and artistic sites

Distances

Railway station: Km 0,3

Highway: Km 25

Airport: Fiumicino Km 35

Via Principe Amedeo, 3 - 00185 Roma - ITALY

T +39 06 47741 F +39 06 4740413

metropole.rm@starhotels.it

starhotels.com

Metropole

ROMA

Restaurant & Bar

Dip into a menu of local gastronomic delights in our Apicio Restaurant by Eataly. The menu ranges from Roman fare in a modern key, such as carbonara-filled ravioli as well as mojito-marinated salmon and a wide selection of American-inspired grilled meats.

Grab a coffee or cocktail in our stylish Rendez Vous Bar, where many legendary nights begin and end.



Metropole

ROMA



236 Rooms

- 105 Superior
- 49 Deluxe
- 54 Executive
- 21 Junior Suite
- 7 Suite

Rich, cherrywood furniture, gorgeous bathrooms, tactile fabrics. Each of our 236 rooms and suites has been refurbished to an exceptional standard and some feature panoramic views across to St Peter's Basilica.



Metropole

ROMA



Meetings & Events

Meeting rooms: 9

Capacity (theatre style): 160 max

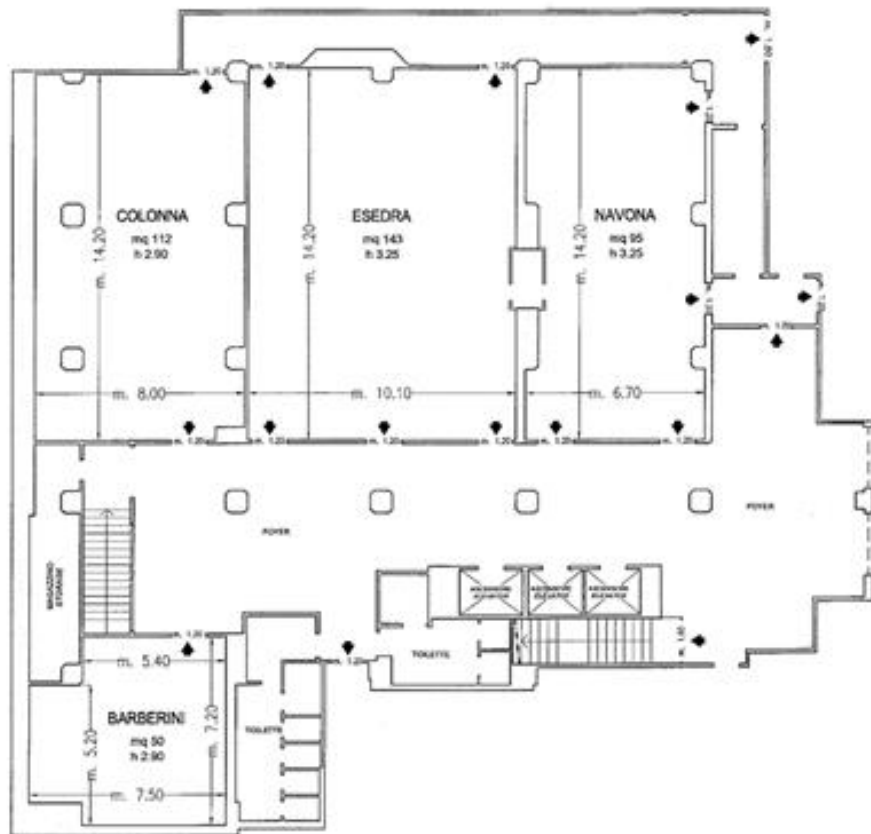
Our meeting rooms have recently been completely renovated.

From business meetings to conferences and large conventions, the Metropole Rome specializes in delivering events with flair.

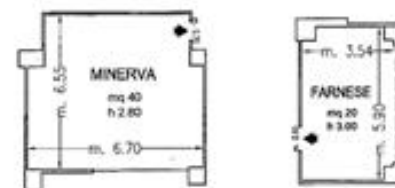


Metropole

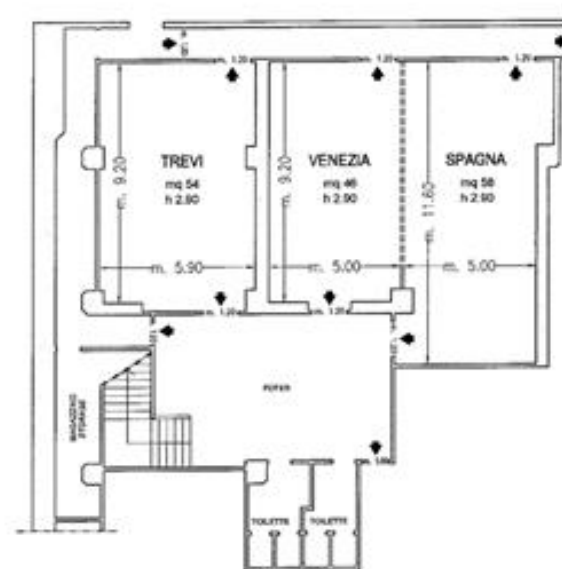
ROMA



Piano -1 / Basement



Piano Terra / Ground Floor



Piano -2 / Floor -2

- ◆ Uscite di sicurezza / Emergency Exits
- - - Finestre / Windows
- ▬▬▬▬▬ Pareti mobili / Modular Walls
- Colonne / Columns

Metropole

ROMA

Meeting rooms	Area mq / ft.	L x W mt. / ft.	Height mt./ ft.	Theatre	Class room	Conference table/ U-shape	Cabaret style^	Cocktail reception	Banquet
Esedra	143 1536,68	14,20x10,10 46,59x33,14	3,25 10,66	160	84	50 - 40	72	120	-
Navona	95 1022,2	14,20x6,70 46,59x21,98	3,25 10,66	70	36	32 - 28	32	60	-
Colonna	112 1205,12	14,20x8,00 46,59x26,25	2,9 9,51	80	42	32 - 28	32	70	-
Barberini	50 538	5,20x5,40 17,06x17,72	2,9 9,51	40	24	25 - 18	-	-	-
Trevi	54 581,04	9,20x5,90 30,18x19,36	2,9 9,51	50	30	25 - 22	24	-	-
Venezia	46 494,96	9,20x5,00 30,18x16,40	2,9 9,51	40	30	25 - 20	-	-	-
Spagna	58 624,08	11,60x5,00 38,06x16,40	2,9 9,51	55	36	30 - 25	24	-	-
Venezia + Spagna	100 1076	9,20x10,00 30,18x32,81	2,9 9,51	90	42	38 - 32	40	-	-
Minerva	40 430,4	6,55x6,70 21,49x21,98	2,8 9,19	28	18	20 - 15	-	50	-
Farnese°	20 215,2	5,90x3,54 19,36x11,61	3 9,84	-	-	10	-	-	-
N° 10 Studio	15-20 161,46 - 215,28	-	3 9,84	-	-	12	-	-	-
Apicio Restaurant	357 3841,32	17x13+13x13 58x42+42x42	2,80 9,19	-	-	-	-	350	200

° Daylight

^ Cabaret style: Size tables on request